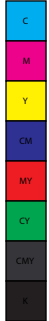
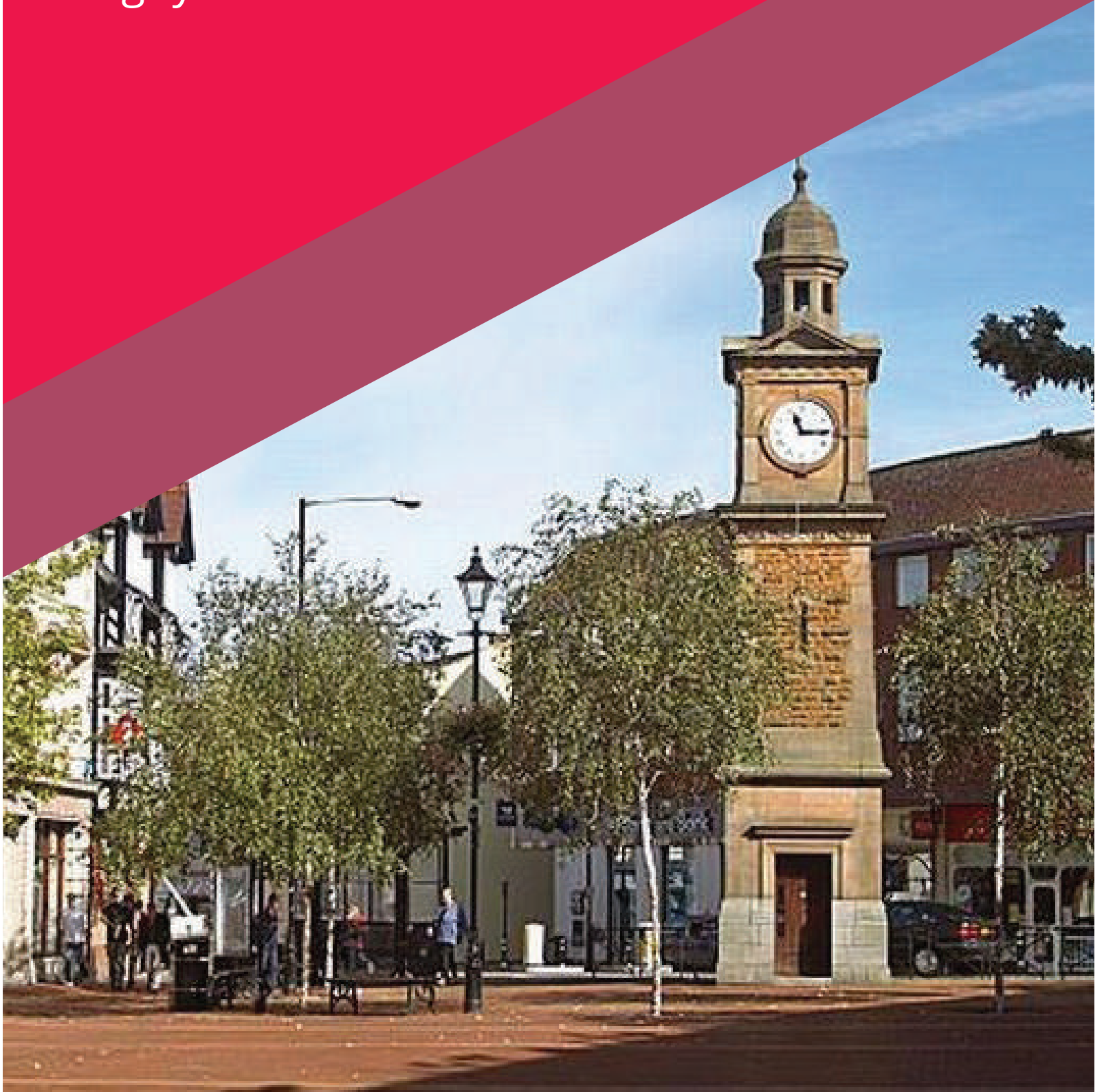




A Common Sense Plan for the Future of our Community

Rugby Labour Manifesto 2022



 Labour

RUGBY LABOUR MANIFESTO 2022



“We have the ideas, motivation and know-how to make improvements.”



CLLR MAGGIE O'ROURKE
LABOUR GROUP LEADER AND BENN WARD COUNCILLOR







The Rugby Labour Party understands that the changing demands of its residents and its businesses require a strong lead and reliable solutions.

Looking to the future, the town needs imaginative ideas to bring footfall back; we deserve services and transportation links that are fit for purpose and fulfil the needs of all its residents. Accessible housing and so is reducing homelessness is a must. Having easy access to vital services such as police, ambulance and hospitals, thats a right that towns such as Rugby and Bulkington deserve.

We know that services have decreased, bills have gone up, job security is very low and we also understand that to improve these will not be a quick fix solution. We do have the ideas, the motivation and the know-how to make these improvements, with your support and your votes in the local and national elections.

Today we renew our pledges to support everyone in the town and its surrounding areas through a revised look at the issues where the greatest support is needed. We value your feedback and we want to talk to you – get in touch and let us know how we can help...

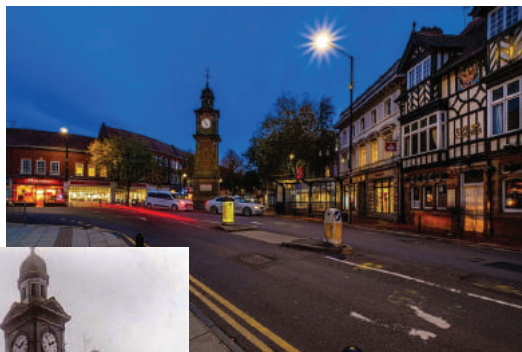
CONTENTS

-  **SUPPORTING THE HERITAGE OF RUGBY & BULKINGTON**
-  **A TOWN CENTRE REIMAGINED**
-  **ACCESSIBLE HOUSING FOR ALL**
-  **INFRASTRUCTURE FOR A GROWING LOCATION**
-  **THE FUTURE IS GREEN**
-  **CREATING SAFER NEIGHBOURHOODS**



SUPPORTING THE HERITAGE OF RUGBY & BULKINGTON

Rugby Labour believes we revitalise our communities by creating an open, friendly area that promotes our shared diverse culture that reflects the town’s long manufacturing heritage. We draw on our long history so we can encourage more visitors, businesses and events to the town to bolster economic growth.



Labour proposes we enhance our offer to skilled industries and support the arts and creative Industries.

As well as celebrating our unique place in sporting history as the home of the game, we believe our town can offer much more than that.

We want to use existing spaces like Rugby Art Gallery and Museum to showcase our town’s history and highlight its position in the nations history. We hold a world class art collection which we would display whilst promoting contemporary display work by local artists. Cultural offerings and celebrations of playwrights as well as social events for children and adults alike would be promoted.

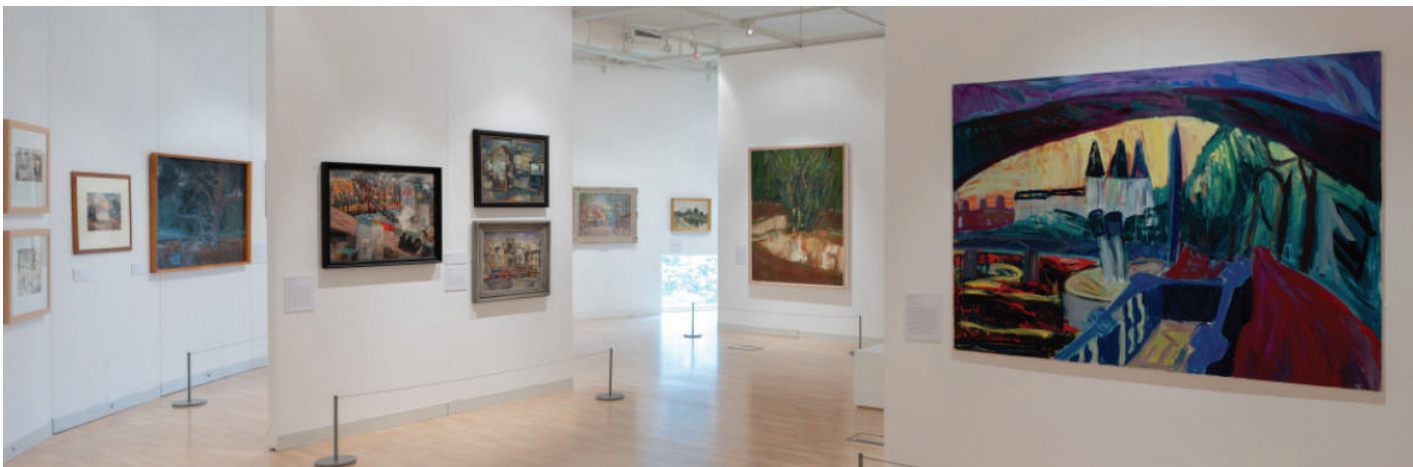


Photo source: Rugby Art Gallery website. The Rugby Collection is a renowned collection of 20th century and Contemporary British Art. The Collection contains over 170 artworks in a variety of media from painting and prints to drawing and video, including works by L. S. Lowry, Stanley Spencer, Paula Rego and Graham Sutherland

A TOWN CENTRE REIMAGINED

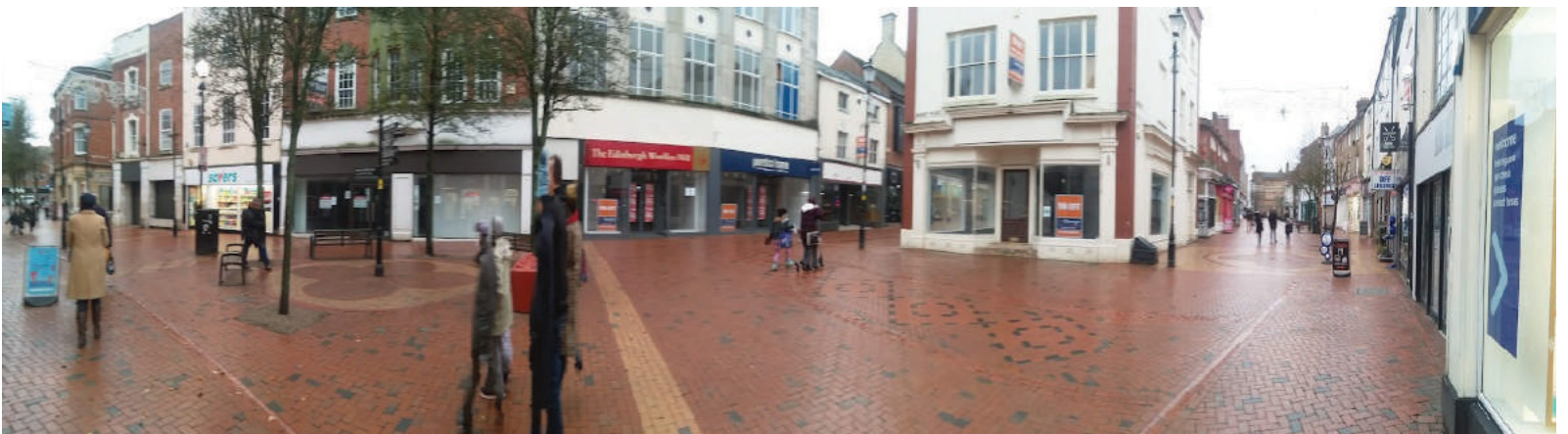


Rugby Labour would push for a radical reimagining of the town centre to create a dynamic and fresh centre that highlights its beautiful architecture and unique character. We would celebrate our local shops and boutique enterprises.

We need to radically change the nature of the high street. It deserves to be a destination in itself not a means to get elsewhere – this will take imagination, vision and partnership with local investors.

Rugby Labour are committed to conducting an audit of empty buildings in the town centre which could be brought back into use, and exploring ideas like providing a hub for self-employed people and small businesses-investor hubs to work from and access support, as well as an accessible town centre hub where all council and voluntary services are in one place.

This focused delivery will then work with charity and state partners to tackle poverty at the local level and endeavour to protect community from the cost of living crisis launched as part of austerity politics.



ACCESSIBLE HOUSING FOR ALL

We have seen many new housing developments being approved in our local area in recent years, but there remains an acute lack of affordable housing for purchase for those wanting to get a foot on the commercial housing ladder. Many local people are locked out of the market, unable to access limited council homes and out bid by Buy-to-Let buyers. There is also a paucity of council and social rented properties.

We believe that the best way to solve our housing crisis is to invest in a housing mix that serves our existing community and is affordable, accessible and energy efficient.

As well as tackling the climate emergency, the best way to tackle rising fuel bills is to make sure the council's housing stock is properly insulated and fit for the future.

A Labour-run council would make it our mission from day one to ensure all homes were efficient and affordable to heat, all council, social and private properties were free from damp and mould and all homes were carbon neutral.

We would also explore setting up a Council-owned Homes for Rent company, working as a not for profit enterprise, rented at prices in line with current council properties, with the money being reinvested in future house building.



Example of modern, spacious council homes built in Newcastle promoting contemporary living and challenging perceptions.

INFRASTRUCTURE FOR A GROWING LOCATION



Rugby Labour members petitioned the Tory MP successfully and forced a debate in Parliament regarding concerns of public safety regarding the loss of our Ambulances.

We all know that we have not been well-served with infrastructure under the current government and Tory council.

Despite promises to do something and photo-opportunities from our Tory MP - we have seen a steady flow of reduced services at St.Cross, a reduction in locally-based ambulances and a high demand for school places and dither from the Tory County Council.

Labour would make clear that it is unsustainable to build development upon development without providing sufficient roads, schools and health services.

Our councillors are already campaigning on issues like building a new school in the north of Rugby, better regulation on Houses in Multiple Occupancy and have been consistent in calling to bring services back to St.Cross.

We desperately need more Labour councillors elected to add to these campaigns and put pressure on our Conservative-controlled local councils and government.

Only you can make that happen.



If we build - we must build with a future. People need health and education services. Labour will always make it clear that unsustainable development is unacceptable.



If we build - we must build with a vision - not submit to corporate buildings and bland design. We need design with identity that can represent a regenerated Rugby.

THE FUTURE IS GREEN



As part of our plan to help our high street, Labour are already working on plans to help local businesses become energy efficient, proposing a fund at a recent council budget meeting to support the transition to net zero by 2030.

We believe that fighting climate change and boosting the local economy can go hand-in-hand, through schemes like buying council products from local suppliers to reduce our carbon footprint, creating jobs and apprenticeships by insulating homes and switching to local energy producers.



Whilst our local MP was in the news recently due to his £30,000 a year second job in the plastic packaging industry and speaking in Parliament against banning single-use plastics, Labour takes a different approach and wants to end the use of single-use plastics in council buildings and contracts held by the council.



In order to tackle fly-tipping and littering, we want to create local funds for each council ward so that the council can tackle fly-tipping quickly and provide support and equipment for local groups to carry out litter-picking and create community gardens.

In our urban areas, we want to preserve our green spaces and protect them from development by creating a register of community assets, expand urban green spaces and invest in maintaining and cleaning up our existing parks.

CREATING SAFER NEIGHBOURHOODS



Areas like this show decay and make people feel unsafe. Labour Councillors want to target areas like this and urge regeneration - improving ASB and perceptions of safety.

Our plans consider fly-tipping and littering as anti-social behaviour, it drags down our communities so our aim is make our communities places where people are proud to live.

In order to do this, we believe we need a community approach to crime.

We would work to establish community forums in different parts of the borough where residents can meet with police, councillors and officers to highlight crime or anti-social behaviour 'hotspots' in their local area.



Our councillors are active in developing a more secure community. They understand the effects of crime on local residents.

After years of cuts to police services by the government, we want to re-establish transparency and community partnership in how we tackle crime.

Labour would promote community-led initiatives for example: restoring street-lights overnight by making them key priorities when we meet with the police and County Council, or having urban walks with local police to highlight areas of concern that require further police attention that have been reported by constituents.



Rugby Labour Councillors work with Wardens and the Police to report on ASB issues affecting residents.

Labour will work to bolster police services.

RUGBY LABOUR PLEDGES TO YOU



ACT ON THE CLIMATE EMERGENCY

Prioritise becoming carbon neutral by 2030, promoting healthy and green transport options like walking and cycling. Support residents with a home insulation fund to reduce energy bills.



REBUILD OUR TOWN CENTRE

Support small, independent local businesses to reduce the number of empty shops and help our high street thrive.



MAKE COUNCIL SERVICES ACCESSIBLE

Build an accessible town centre hub where all council and voluntary services are in one place and work with partners to tackle poverty and the cost of living crisis.



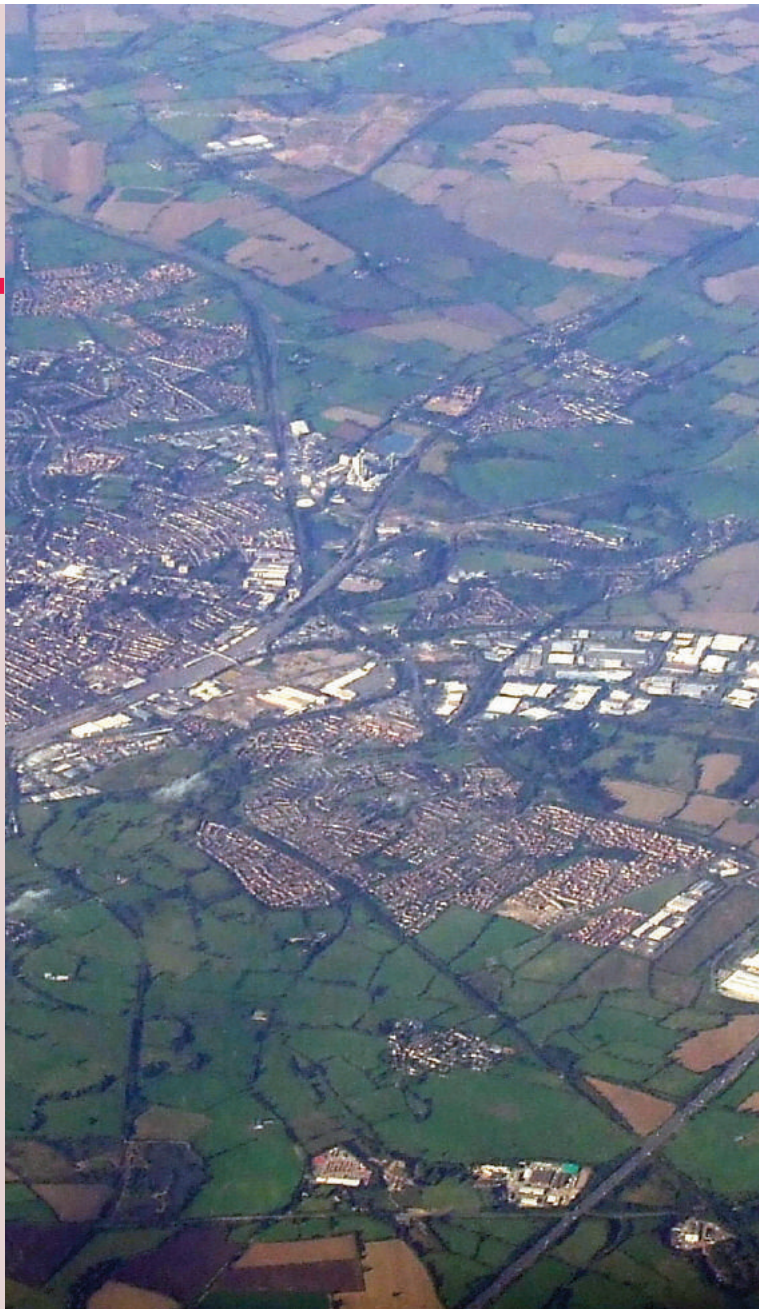
BUILD HOMES THAT PEOPLE NEED

Invest in energy-efficient social housing to tackle the housing crisis, affordability issues and homelessness.



SAFER, CLEANER NEIGHBOURHOODS

Support community groups with the money and resources they need to clean local areas and improve the neighbourhoods where we live. Tackle crime and anti-social behaviour.



GET IN TOUCH

- facebook.com/rugbylabour
- rugbylabour@gmail.com
- www.rugbylabour.co.uk
- 07973 838228